

Real Estate Summary

Naceville Materials

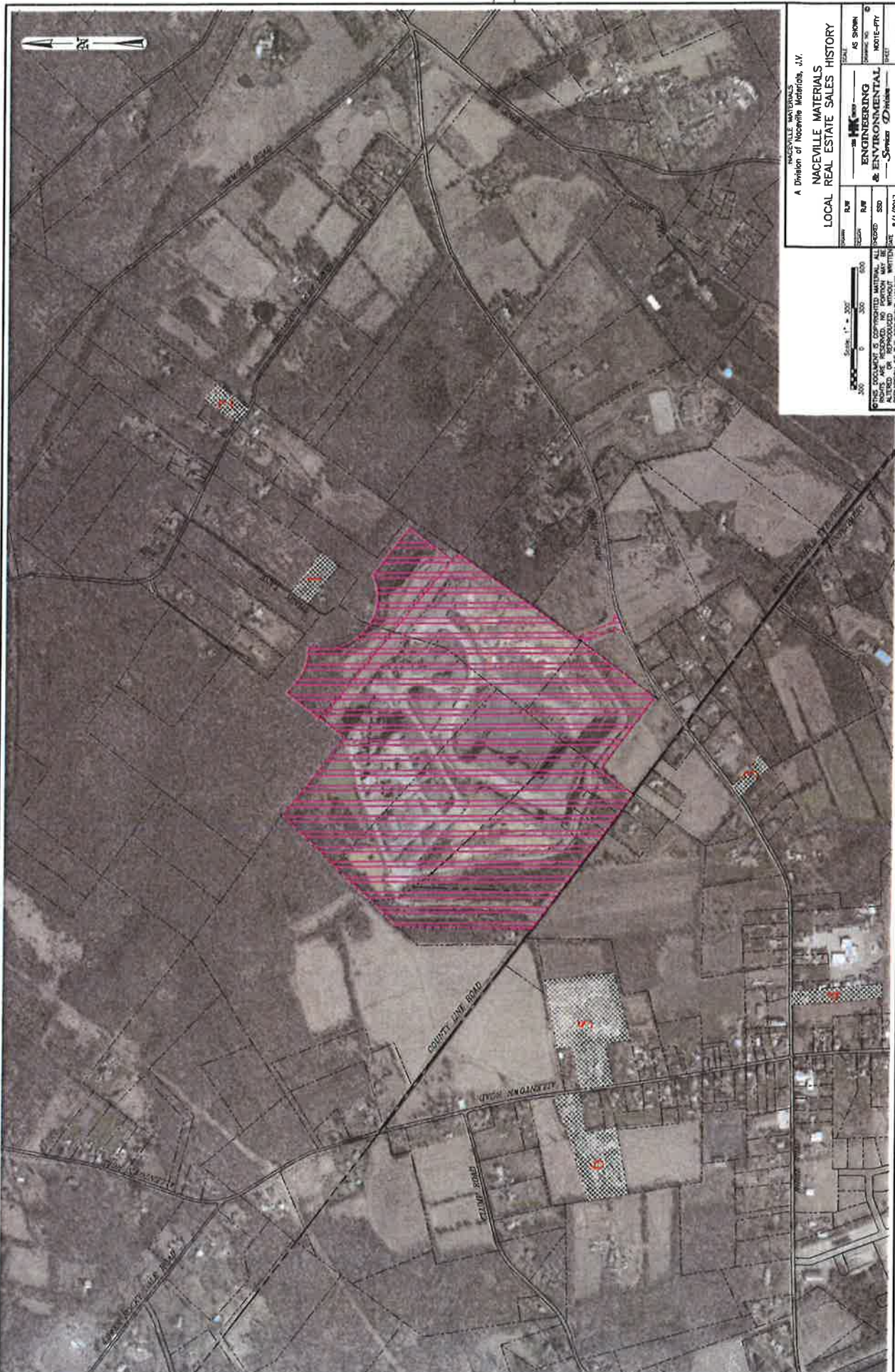
"6 Properties"

- 1) Shady Lane
 - a. 3 Bed/2 Bath, 1,700 s.f. on 1.43 ac.
 - i. 1997 - \$155k
 - ii. 2012 - \$205k
 - iii. 2017 - \$338k
- 2) Thousand Acre Road
 - a. 4 Bed/3 Bath, 2,500 s.f. on 1.47 ac.
 - i. Original Listing \$400k
 - ii. On Market \$368k
- 3) Ridge Road (Mont. Co.)
 - a. 3 Bed/1 Bath, 1,600 s.f. on 0.67 ac.
 - i. 1989 - \$125k
 - ii. 2003 - \$195k
- 4) Ridge Road (Mont. Co.)
 - a. 3 Bed/1 ½ Bath, 1,800 s.f. on 1.5 ac.
 - i. 2002 - \$180k
 - ii. 2012 - \$250k
 - iii. 2016 - \$270k
- 5) Allentown Road (Mont. Co.)
 - a. 3 Bed/3 Bath, 2,600 s.f. on 7.8 ac.
 - i. 1999 - 244k
 - ii. 2010 - \$240k
 - iii. 2016 - \$330k
- 6) Allentown Road (Mont. Co.)
 - a. 3 Bed/1 ½ Bath, 2,000 s.f. on 4.94 ac.
 - i. 1983 - \$57k
 - ii. 1999 - \$142k
 - iii. 2001 - \$160k

H&K Materials

Luxury Home Developments

- 1) Toll Brothers – “Estate at Hilltown”
 - a. 2006 Start
 - b. 5,000 s.f. Singles - \$650k to \$1.0 M+
- 2) Hallmark Homes – “Highfield Estates”
 - a. 2017 Start
 - b. 3,000 to 5,000 s.f. Singles - \$640k to \$840k

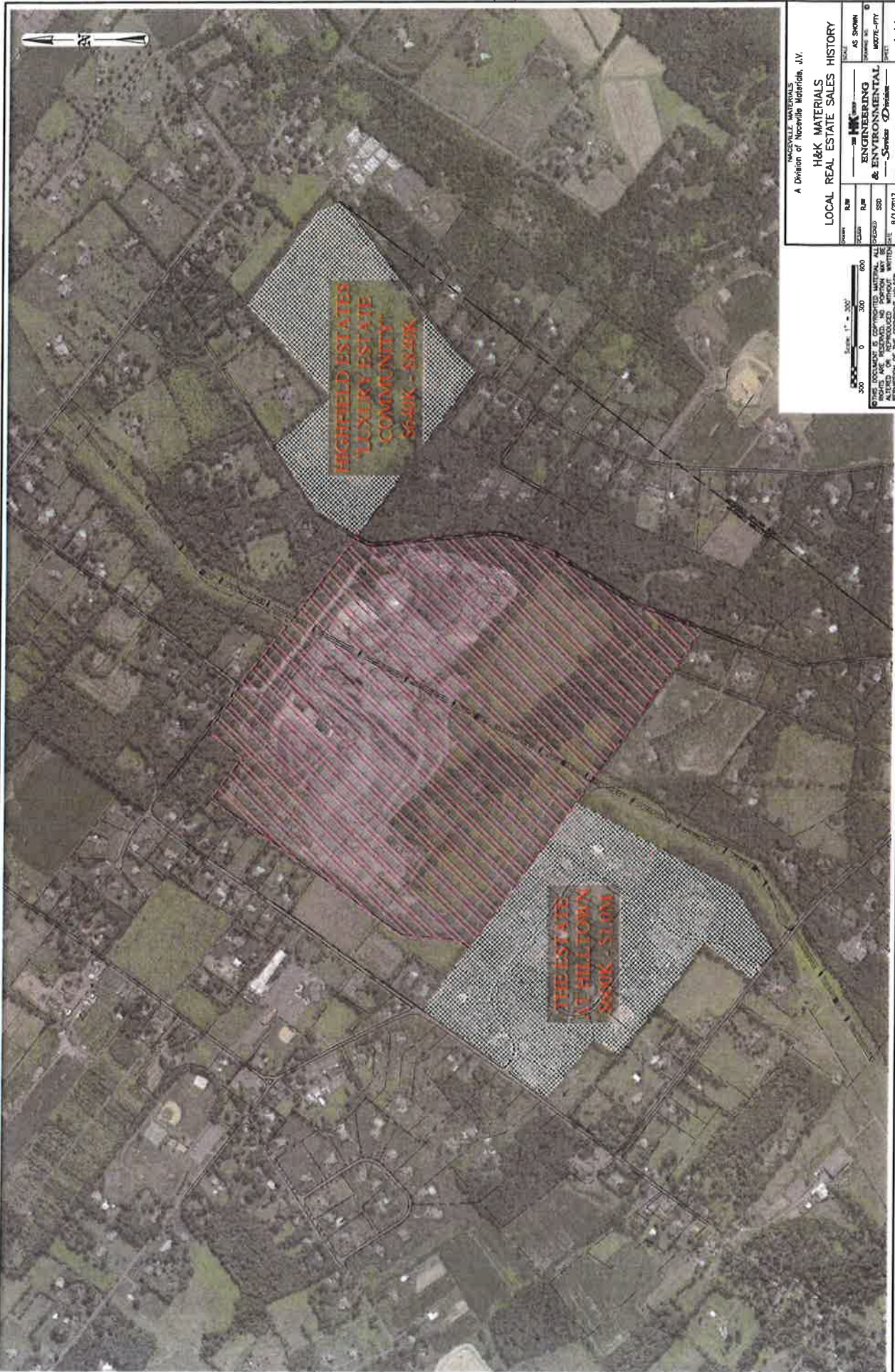


NACEVILLE MATERIALS
 A Division of Nacerville Materials, JV.
NACEVILLE MATERIALS
LOCAL REAL ESTATE SALES HISTORY

Parcel	RAW	SEC	RAW	AS SHOWN
1	SEC	SEC	SEC	SEC
2	SEC	SEC	SEC	SEC
3	SEC	SEC	SEC	SEC
4	SEC	SEC	SEC	SEC
5	SEC	SEC	SEC	SEC
6	SEC	SEC	SEC	SEC
7	SEC	SEC	SEC	SEC
8	SEC	SEC	SEC	SEC
9	SEC	SEC	SEC	SEC
10	SEC	SEC	SEC	SEC
11	SEC	SEC	SEC	SEC
12	SEC	SEC	SEC	SEC
13	SEC	SEC	SEC	SEC
14	SEC	SEC	SEC	SEC
15	SEC	SEC	SEC	SEC
16	SEC	SEC	SEC	SEC
17	SEC	SEC	SEC	SEC
18	SEC	SEC	SEC	SEC
19	SEC	SEC	SEC	SEC
20	SEC	SEC	SEC	SEC
21	SEC	SEC	SEC	SEC
22	SEC	SEC	SEC	SEC
23	SEC	SEC	SEC	SEC
24	SEC	SEC	SEC	SEC
25	SEC	SEC	SEC	SEC
26	SEC	SEC	SEC	SEC
27	SEC	SEC	SEC	SEC
28	SEC	SEC	SEC	SEC
29	SEC	SEC	SEC	SEC
30	SEC	SEC	SEC	SEC
31	SEC	SEC	SEC	SEC
32	SEC	SEC	SEC	SEC
33	SEC	SEC	SEC	SEC
34	SEC	SEC	SEC	SEC
35	SEC	SEC	SEC	SEC
36	SEC	SEC	SEC	SEC
37	SEC	SEC	SEC	SEC
38	SEC	SEC	SEC	SEC
39	SEC	SEC	SEC	SEC
40	SEC	SEC	SEC	SEC
41	SEC	SEC	SEC	SEC
42	SEC	SEC	SEC	SEC
43	SEC	SEC	SEC	SEC
44	SEC	SEC	SEC	SEC
45	SEC	SEC	SEC	SEC
46	SEC	SEC	SEC	SEC
47	SEC	SEC	SEC	SEC
48	SEC	SEC	SEC	SEC
49	SEC	SEC	SEC	SEC
50	SEC	SEC	SEC	SEC
51	SEC	SEC	SEC	SEC
52	SEC	SEC	SEC	SEC
53	SEC	SEC	SEC	SEC
54	SEC	SEC	SEC	SEC
55	SEC	SEC	SEC	SEC
56	SEC	SEC	SEC	SEC
57	SEC	SEC	SEC	SEC
58	SEC	SEC	SEC	SEC
59	SEC	SEC	SEC	SEC
60	SEC	SEC	SEC	SEC
61	SEC	SEC	SEC	SEC
62	SEC	SEC	SEC	SEC
63	SEC	SEC	SEC	SEC
64	SEC	SEC	SEC	SEC
65	SEC	SEC	SEC	SEC
66	SEC	SEC	SEC	SEC
67	SEC	SEC	SEC	SEC
68	SEC	SEC	SEC	SEC
69	SEC	SEC	SEC	SEC
70	SEC	SEC	SEC	SEC
71	SEC	SEC	SEC	SEC
72	SEC	SEC	SEC	SEC
73	SEC	SEC	SEC	SEC
74	SEC	SEC	SEC	SEC
75	SEC	SEC	SEC	SEC
76	SEC	SEC	SEC	SEC
77	SEC	SEC	SEC	SEC
78	SEC	SEC	SEC	SEC
79	SEC	SEC	SEC	SEC
80	SEC	SEC	SEC	SEC
81	SEC	SEC	SEC	SEC
82	SEC	SEC	SEC	SEC
83	SEC	SEC	SEC	SEC
84	SEC	SEC	SEC	SEC
85	SEC	SEC	SEC	SEC
86	SEC	SEC	SEC	SEC
87	SEC	SEC	SEC	SEC
88	SEC	SEC	SEC	SEC
89	SEC	SEC	SEC	SEC
90	SEC	SEC	SEC	SEC
91	SEC	SEC	SEC	SEC
92	SEC	SEC	SEC	SEC
93	SEC	SEC	SEC	SEC
94	SEC	SEC	SEC	SEC
95	SEC	SEC	SEC	SEC
96	SEC	SEC	SEC	SEC
97	SEC	SEC	SEC	SEC
98	SEC	SEC	SEC	SEC
99	SEC	SEC	SEC	SEC
100	SEC	SEC	SEC	SEC

Scale: 1" = 200'
 0 100 200 300 400 500 600
 Feet

THIS DOCUMENT IS COPYRIGHTED MATERIAL. ALL RIGHTS ARE RESERVED. NO PART OF THIS DOCUMENT MAY BE REPRODUCED WITHOUT THE WRITTEN PERMISSION OF THE COPYRIGHT HOLDER. DATE: 8/1/2017



**HIGHFIELD ESTATES
LUXURY ESTATE
COMMUNITY**
\$6,40K - \$8,25K

**THE ESTATE
AT HILLTOWN**
\$6,80K - \$1,00K

HICKORY GROVES
 A Division of Nashville Materials, LLC
H&K MATERIALS
LOCAL REAL ESTATE SALES HISTORY

OWNER	RMP	SCALE	RMP	SCALE	RMP	SCALE	DATE
							8/7/2017

AS SHOWN
 ENGINEERING & ENVIRONMENTAL SERVICES
 10077-PTY
 1 of 1

SCALE: 1" = 300'
 300 0 300 600
 OTHER DOCUMENTS & COPYRIGHTED MATERIAL. ALL RIGHTS RESERVED. THIS DOCUMENT IS UNLAWFULLY ALTERED OR REPRODUCED WITHOUT WRITTEN PERMISSION OF THE COPYRIGHT HOLDER.